



**ONLY 2 PLOTS REMAINING**

**NOW AVAILABLE**

**Show home available to view!**

**Earls Court Road, SP4 7AL**

T W E L V E F I F T E E N  
**HERITAGE HOMES**

**HUNTER CLOSE, AMESBURY, SP4 7YS**

**New Build – HELP TO BUY\***

**ONLY 5% DEPOSIT\***

\*5% deposit only available with Help to Buy purchase



- Minutes from the High Street with Local shops including: Restaurants, Supermarket, Post Office, Library, Emergency Services and Dentist etc.
- Transport connections are excellent with the A303 close by connecting you to London and the West Country.

**0207 486 7707**

1215 Heritage Homes reserve the right to change the layout details at any time. Floor plans, photographs, computer generated images and dimensions are shown for indicative purposes only. Furniture shown on the plans and images are for illustrative purposes only. Whilst every effort has been made to ensure the specification and materials contained within this document are correct, it has been designed as a guide only. 1215 Heritage Homes reserves the right to amend the specification as necessary and without notice. This does not constitute or form any part of a contract of sale.

Email : [info@1215heritagehomes.co.uk](mailto:info@1215heritagehomes.co.uk)

Web : [www.1215heritagehomes.co.uk](http://www.1215heritagehomes.co.uk)

**FROM £279,000**

**NO STAMP DUTY TO PAY\***

\*for first time buyers purchasing under £300,000

**5 New Build 3 Bedroom Homes and 1 x 4 Bedroom Home.**

Available to purchase with only **5% deposit** with Help to Buy  
**20% Government Equity Loan Funding**

**Properties:**

3 Hunter Close 3 Bed Semi Detached Plot 3	Guide £279,000
2 Hunter Close 3 Bed Semi Detached Plot 4	Guide £285,000 <b>**SHOW HOME**</b>
6 Hunter Close 3 Bed Detached Plot 6	<b>SOLD £325,000</b>
5 Hunter Close 3 Bed Semi Detached Plot 1	<b>SOLD £285,000</b>
4 Hunter Close 3 Bed Semi Detached Plot 2	<b>SOLD £279,000</b>
Hunter House (1) 4 Bed Plot 5	<b>SOLD - £425,000</b>

Agents Note: Please note floorplans are not to scale.



**ONLY 2 PLOTS REMAINING**  
**NOW AVAILABLE**

**Show home available to view!**  
**Earls Court Road, SP4 7AL**

TWELVE FIFTEEN  
**HERITAGE HOMES**  
SHOW HOME



\*photos and visuals are shown as an indicative illustration

1215 Heritage Homes reserve the right to change the layout details at any time. Floor plans, photographs, computer generated images and dimensions are shown for indicative purposes only. Furniture shown on the plans and images are for illustrative purposes only. Whilst every effort has been made to ensure the specification and materials contained within this document are correct, it has been designed as a guide only. 1215 Heritage Homes reserves the right to amend the specification as necessary and without notice. This does not constitute or form any part of a contract of sale.

**0207 486 7707**

Email : [info@1215heritagehomes.co.uk](mailto:info@1215heritagehomes.co.uk)

Web : [www.1215heritagehomes.co.uk](http://www.1215heritagehomes.co.uk)

Agents Note: Please note floorplans are not to scale.



**ONLY 2 PLOTS REMAINING**  
**NOW AVAILABLE**

**Show home available to view!**  
**Earls Court Road, SP4 7AL**

T W E L V E F I F T E E N  
**HERITAGE HOMES**  
SHOW HOME



\*Our show home is located approx. 5 minutes drive away on Earls Court Road.

**0207 486 7707**

\*Site plans and visuals are shown as an indicative illustration

12

*1215 Heritage Homes reserve the right to change the layout details at any time. Floor plans, photographs, computer generated images and dimensions are shown for indicative purposes only. Furniture shown on the plans and images are for illustrative purposes only. Whilst every effort has been made to ensure the specification and materials contained within this document are correct, it has been designed as a guide only. 1215 Heritage Homes reserves the right to amend the specification as necessary and without notice. This does not constitute or form any part of a contract of sale.*

Email : [info@1215heritagehomes.co.uk](mailto:info@1215heritagehomes.co.uk)

Web : [www.1215heritagehomes.co.uk](http://www.1215heritagehomes.co.uk)

Agents Note: Please note floorplans are not to scale.

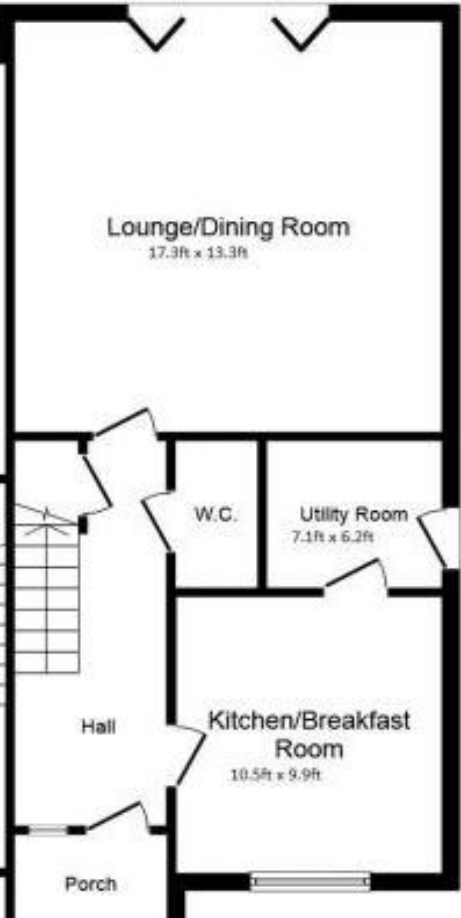


**ONLY 2 PLOTS REMAINING**  
**NOW AVAILABLE**

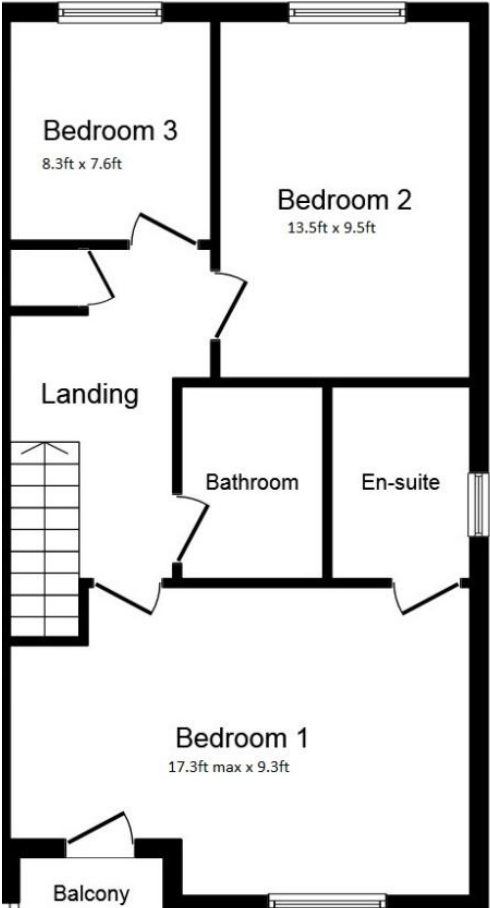
**Show home available to view!**  
**Earls Court Road, SP4 7AL**

TWELVE FIFTEEN  
**HERITAGE HOMES**

**Semi – Detached 3 Bed Homes – Internal Layouts**  
Plots 3 & 4 **STILL AVAILABLE** **FROM £279,000**



Ground Floor



First Floor



**0207 486 7707**

\*Site plans and visuals are shown as an indicative illustration

1215 Heritage Homes reserve the right to change the layout details at any time. Floor plans, photographs, computer generated images and dimensions are shown for indicative purposes only. Furniture shown on the plans and images are for illustrative purposes only. Whilst every effort has been made to ensure the specification and materials contained within this document are correct, it has been designed as a guide only. 1215 Heritage Homes reserves the right to amend the specification as necessary and without notice. This does not constitute or form any part of a contract of sale.

Email : [info@1215heritagehomes.co.uk](mailto:info@1215heritagehomes.co.uk)

Web : [www.1215heritagehomes.co.uk](http://www.1215heritagehomes.co.uk)

Agents Note: Please note floorplans are not to scale.

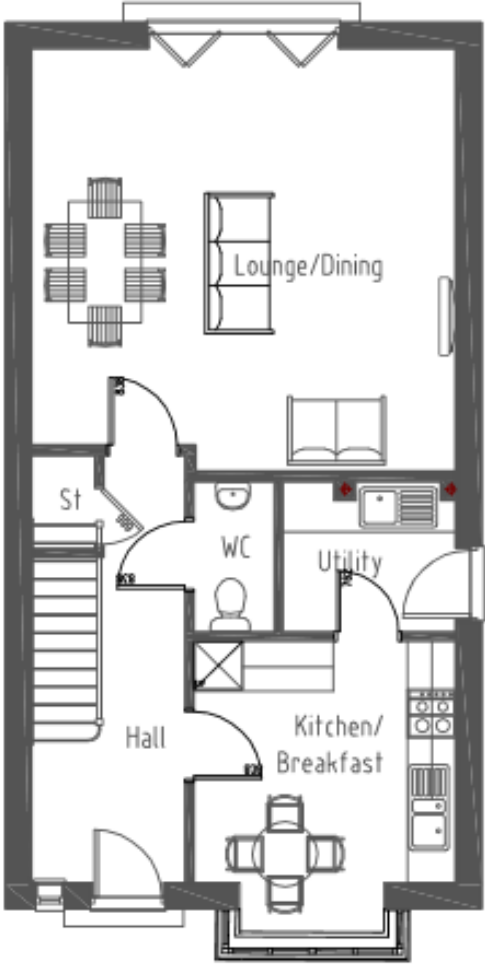


**ONLY 2 PLOTS REMAINING**  
**NOW AVAILABLE**

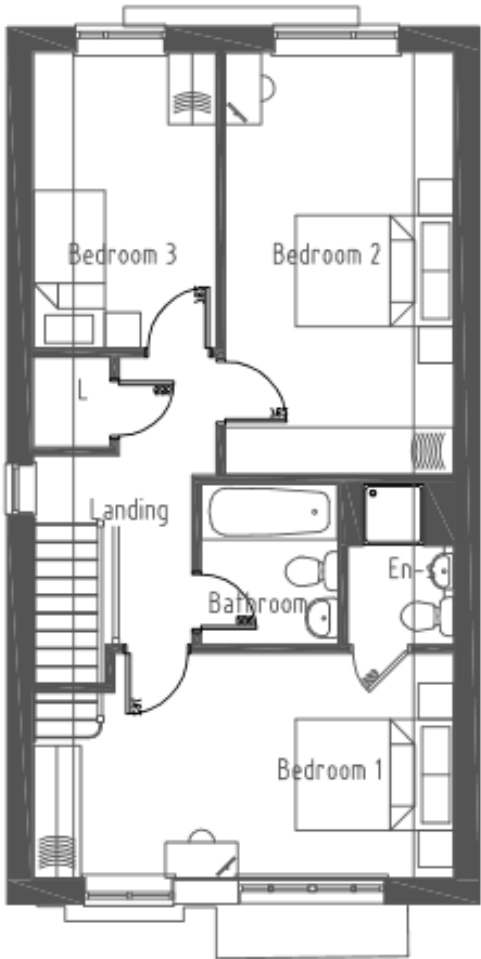
**Show home available to view!**  
**Earls Court Road, SP4 7AL**

TWELVE FIFTEEN  
**HERITAGE HOMES**

**Detached 3 Bed Home**  
Plot 6

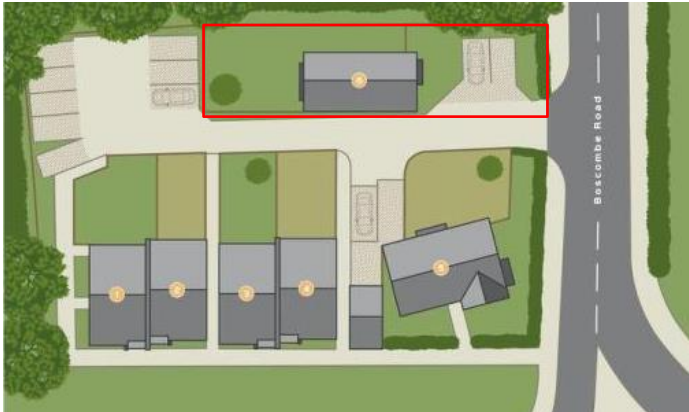


Ground Floor



First Floor

**Internal Layouts**  
**SOLD**



**0207 486 7707**

\*Site plans and visuals are shown as an indicative illustration

1215 Heritage Homes reserve the right to change the layout details at any time. Floor plans, photographs, computer generated images and dimensions are shown for indicative purposes only. Furniture shown on the plans and images are for illustrative purposes only. Whilst every effort has been made to ensure the specification and materials contained within this document are correct, it has been designed as a guide only. 1215 Heritage Homes reserves the right to amend the specification as necessary and without notice. This does not constitute or form any part of a contract of sale.

Email : [info@1215heritagehomes.co.uk](mailto:info@1215heritagehomes.co.uk)

Web : [www.1215heritagehomes.co.uk](http://www.1215heritagehomes.co.uk)

Agents Note: Please note floorplans are not to scale.



**ONLY 2 PLOTS REMAINING**  
**NOW AVAILABLE**

**Show home available to view!**  
**Earls Court Road, SP4 7AL**

T W E L V E F I F T E E N  
**HERITAGE HOMES**

**Site Plan**  
**Plot 1,2,3,4,5,6,**



\*Site plans and visuals are shown as an indicative illustration

**0207 486 7707**

Email : [info@1215heritagehomes.co.uk](mailto:info@1215heritagehomes.co.uk)

Web : [www.1215heritagehomes.co.uk](http://www.1215heritagehomes.co.uk)

1215 Heritage Homes reserve the right to change the layout details at any time. Floor plans, photographs, computer generated images and dimensions are shown for indicative purposes only. Furniture shown on the plans and images are for illustrative purposes only. Whilst every effort has been made to ensure the specification and materials contained within this document are correct, it has been designed as a guide only. 1215 Heritage Homes reserves the right to amend the specification as necessary and without notice. This does not constitute or form any part of a contract of sale.

Agents Note: Please note floorplans are not to scale.